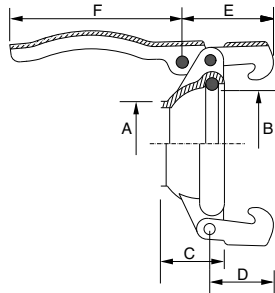


SPHERICAL COUPLING IN IRON RACCORS SPHERIQUES EN FER UNIÃO À RÓTULA EM FERRO

Tipo	ø mm	Cod.	P.V.P. €
S-3	20	32179	7,08
	25	32180	7,08
	30	31652	7,08
	35	31653	7,08
	40	31654	7,08
	45	31655	7,08
S-5	60	31658	9,17
	70	31659	9,17
	70	31660	11,63
S-7	75	31661	11,63
	80	31662	11,63
	90	31663	11,63
S-10	100	31664	13,28
	110	31665	13,28
S-12	120	31666	16,46
	125	31667	16,46
S-15	140	31668	21,23
	150	31669	21,23
	160	31670	21,23
S-20	200	31671	58,05
S-25	250	31672	86,05
S-30	300	31673	202,75

Fig. 111-S

Hembra para soldar
Female for weld
Femelle à souder
Fêmea para soldar



	S-3	S-5	S-7	S-10	S-12	S-15	S-20	S-25	S-30
A	(1)	56	77	95	119	144	207	246	308
B	72	92	111	131	153	182	233	291	360
C	33	51	52	60	63	69	100	109	130
D	43	43	55	55	55	55	100	100	175
E	57	60	81	81	81	81	138	138	208
F	122	136	160	160	160	160	278	278	—
Kg	0,36	0,54	0,94	1,14	1,35	1,83	5	6,5	14

• La hembra siempre lleva incluida la junta • The joint is include with the female
• Le joint est compris avec la femelle • A fêmea leva sempre a junta incluída

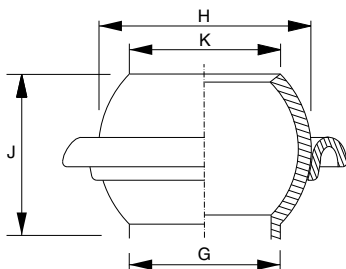
(1) 37 - 42 - 47 - 52 - 61

Tipo	S-3	S-5	S-7	S-10	S-12	S-15	S-20	S-25	S-30
ø mm.	20-25-30-35-40-45-50-60	60-70	70-75-80-90	100-110	120-125	140-150-160	200	250	300

Tipo	GAS	Cod.	P.V.P. €
S-3	1/2"	31674	3,80
	3/4"	31675	3,80
	1"	31676	3,80
	1 1/4"	31677	3,80
	1 1/2"	31678	3,80
	2"	31679	3,80
S-5	2"	31680	3,80
S-7	2 1/2"	31681	6,34
	3"	31682	6,34
S-10	3 1/2"	31683	7,78
	4"	31684	7,78
S-12	4 1/2"	31685	10,43
S-15	5"	31686	15,05
	6"	31687	15,05
S-20	8"	31688	38,61
S-25	10"	31689	81,40
S-30	12"	31690	155,55

Fig. 112-S

Hembra para soldar
Female for weld
Femelle à souder
Fêmea para soldar



	S-3	S-5	S-7	S-10	S-12	S-15	S-20	S-25	S-30
G	(2)	56	75-89	95-114	119	144	205	244	305
H	70	90	110	130	150	180	242	300	368
J53	73	83	90	102	104	137	170	210	210
K51	63	83	100	120	145	194	252	210	305
Kg	0,23	0,42	0,66	0,9	1,3	2,15	5	8	14

• La hembra siempre lleva incluida la junta • The joint is include with the female
• Le joint est compris avec la femelle • A fêmea leva sempre a junta incluída

(2) 34 - 43 - 49 - 61

Tipo	S-3	S-5	S-7	S-10	S-12	S-15	S-20	S-25	S-30
"Gas/Gaz	1/2"-3/4"-1"-1 1/4"-1 1/2"-2"	2"	2 1/2"-3"	3 1/2"-4"	4 1/2"	5"-6"	8"	10"	12"

SPHERICAL COUPLING IN IRON RACCORS SPHERIQUES EN FER UNIÃO À RÓTULA EM FERRO

Fig. 114-M

Hembra para manguera
 Female with spigot
 Femelle porte-tuyau
 Fêmea para mangueira



Tipo	Ø mm	Cod.	P.V.P. €
S-3	20	31691	11,28
	25	31692	11,28
	30	31693	11,28
	35	10802	11,28
	40	11530	11,37
	45	31694	11,37
	50	10809	11,57
S-5	60	10817	12,06
	50	31960	16,23
	60	31695	14,38
	70	13745	16,23
S-7	75	32446	17,96
	50	31961	19,21
	70	31696	17,96
	75	17268	17,96
	80	15122	18,31
S-10	90	10976	19,21
	70	32185	26,14
	75	32432	26,14
	80	32010	26,14
	90	32011	26,14
	100	15123	22,84
S-12	110	15124	26,14
	120	32012	32,36
	110	32013	32,36
	120	31697	32,36
S-15	125	17327	32,36
	125	32014	46,86
	140	31698	46,86
	150	20092	46,86
	160	31699	52,05
S-20	200	090007	135,37
	250	32015	187,15
S-25	250	31700	187,15
S-30	300	31701	313,00

Tipo	S-3	S-5	S-7	S-10	S-12	S-15	S-20	S-25	S-30
Ø mm.	20-25-30-35-40-45-50-60	60-70	70-75-80-90	100-110	120-125	140-150-160	200	250	300

Fig. 115-R

Macho con rosca exterior
 Male with external thread
 Sphère filetage extérieur
 Macho com rosca exterior



Tipo	GAS	Cod.	P.V.P. €
S-3	1/2"	31702	8,79
	3/4"	31703	8,79
	1"	10804	8,79
	1 1/4"	17168	8,79
	1 1/2"	10810	8,79
	2"	10819	9,40
S-5	2"	31704	10,70
	2 1/2"	32016	16,57
S-7	1 1/2"	17916	16,57
	2"	17917	16,57
	2 1/2"	15119	16,57
S-10	3"	10978	16,57
	2 1/2"	32307	25,74
	3"	32320	25,74
	3 1/2"	15120	22,16
S-12	4"	15121	25,74
	2 1/2"	32319	31,05
	3"	32306	31,05
	4"	32261	31,05
	4 1/2"	31705	31,05
S-15	5"	18930	46,00
	5"	31706	40,03
S-20	6"	18927	46,00
	8"	31707	132,67
S-25	10"	32017	consultar
S-30	12"	32018	consultar

Tipo	S-3	S-5	S-7	S-10	S-12	S-15	S-20	S-25	S-30
"Gas/Gaz	1/2"-3/4"-1"-1 1/4"-1 1/2"-2"	2"	2 1/2"-3"	3 1/2"-4"	4 1/2"	5"-6"	8"	10"	12"

SPHERICAL COUPLING IN IRON RACCORS SPHERIQUES EN FER UNIÃO À RÓTULA EM FERRO

Tipo	GAS	Cod.	P.V.P. €
S-3	1/2"	31708	12,60
	3/4"	31709	12,60
	1"	31710	12,60
	1 1/4"	18055	12,89
	1 1/2"	10814	13,86
S-5	2"	13744	17,73
S-7	2 1/2"	31711	20,58
	3"	16254	23,44
S-10	3"	20214	35,75
	3 1/2"	31712	35,75
	4"	31713	41,86
S-12	3"	20215	46,43
	4 1/2"	32019	50,61
S-15	5"	31714	54,81
	6"	31715	66,74
S-20	8"	31716	178,06
S-25	10"		consultar
S-30	12"		consultar

**Fig. 116-RI**

Macho rosca interior
 Male with internal thread
 Sphère filetage intérieur
 Macho com rosca interior

Tipo	S-3	S-5	S-7	S-10	S-12	S-15	S-20	S-25	S-30
"Gas/Gaz	1/2"-3/4"-1"-1 1/4"-1 1/2"-2"	2"	2 1/2"-3"	3 1/2"-4"	4 1/2"	5"-6"	8"	10"	12"

Tipo	GAS	Cod.	P.V.P. €
S-3	1/2"	31717	11,42
	3/4"	31718	11,42
	1"	31719	11,42
	1 1/4"	31720	11,49
	1 1/2"	31721	11,67
S-5	2"	15653	12,25
S-7	2 1/2"	31722	14,53
	3"	31723	18,22
S-10	3 1/2"	31724	19,94
	4"	31725	25,33
S-12	4 1/2"	31726	28,67
	5"	31727	35,78
S-15	6"	31728	47,30
	8"	31729	53,25
S-20	10"	31730	163,15
S-25	12"		consultar
S-30			consultar

**Fig. 118-R**

Hembra con rosca
 Female with external thread
 Femelle filetage extérieur
 Fêmea com rosca

Tipo	S-3	S-5	S-7	S-10	S-12	S-15	S-20	S-25	S-30
"Gas/Gaz	1/2"-3/4"-1"-1 1/4"-1 1/2"-2"	2"	2 1/2"-3"	3 1/2"-4"	4 1/2"	5"-6"	8"	10"	12"

SPHERICAL COUPLING IN IRON RACCORS SPHERIQUES EN FER UNIÃO À RÓTULA EM FERRO



Fig. 119-M

Macho para manguera

Male with spigot

Mâle porte-tuyau

Macho para mangueira

Tipo	ø mm	Cod.	P.V.P. €
S-3	20	31731	8,69
	25	31732	8,69
	30	31733	8,69
	35	17248	8,69
	40	17249	8,79
	45	31734	8,79
	50	17250	8,79
	60	17251	9,25
S-5	50	32344	11,40
	60	31735	10,10
	70	17252	11,49
	75	32445	14,75
S-7	50	32352	16,72
	70	31736	14,75
	75	17267	14,75
	80	17253	16,39
	90	17254	16,72
S-10	70	32345	23,66
	80	32346	23,66
	90	32347	23,66
	100	17255	23,66
	110	17256	23,66
	120	32348	29,68
S-12	100	32349	29,68
	120	31737	29,68
	125	17326	29,68
S-15	100	32350	41,86
	125	32351	41,86
	140	31738	41,86
	150	18926	41,86
	160	31739	41,86
S-20	200	090006	123,82
S-25	250	31740	182,00
S-30	300	31741	261,80

Tipo	S-3	S-5	S-7	S-10	S-12	S-15	S-20	S-25	S-30
ø mm.	20-25-30-35-40-45-50-60	60-70	70-75-80-90	100-110	120-125	140-150-160	200	250	300

SPHERICAL COUPLING IN IRON RACCORS SPHERIQUES EN FER UNIÃO À RÓTULA EM FERRO

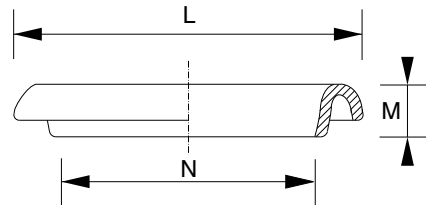
Tipo	ø mm	Cod.	P.V.P. €
S-3	20	92383	2,17
	25		
	30		
	35		
	40		
	45		
	50		
S-5	60	92384	3,90
	70		
S-7	70	92385	5,15
	75		
	80		
S-10	100	91870	6,92
	110		
	120		
S-12	120	92386	8,03
	125		
S-15	140	92387	10,00
	150		
	160		
S-20	200	92388	22,78
S-25	250	31742	56,76
S-30	300	31743	93,16

Fig.120-A

Aro
Ring
Anneau
Anel



	S-3	S-5	S-7	S-10	S-12	S-15	S-20	S-25	S-30
L	93	117	147	161	185	224	291	359	448
M	15	23	27	29	305	37	46	61	68
N	63	77	96	119	140	170	220	283	340



Tipo	S-3	S-5	S-7	S-10	S-12	S-15	S-20	S-25	S-30
ø mm.	20-25-30-35-40-45-50-60	60-70	70-75-80-90	100-110	120-125	140-150-160	200	250	300

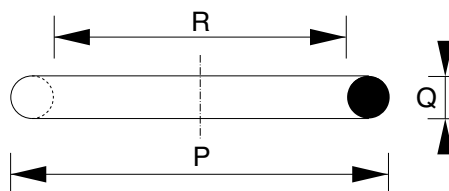
Tipo	ø mm	Cod.	P.V.P. €
S-3	20	10803	1,36
	25		
	30		
	35		
	40		
	45		
	50		
S-5	60	13747	1,55
	70		
S-7	70	10977	1,79
	75		
	80		
S-10	100	9998	2,35
	110		
	120		
S-12	120	17915	3,42
	125		
S-15	140	30492	5,61
	150		
	160		
S-20	200	090814	11,40
S-25	250	31744	16,45
S-30	300	31745	22,72

Fig.121-J

Junta
Joint
Joint
Junta



	S-3	S-5	S-7	S-10	S-12	S-15	S-20	S-25	S-30
P	80	104	125	144	168	202	273	320	400
Q	9	10	12	13	14	16	18	22	23
R	62	84	101	118	140	170	237	276	354



Tipo	S-3	S-5	S-7	S-10	S-12	S-15	S-20	S-25	S-30
ø mm.	20-25-30-35-40-45-50-60	60-70	70-75-80-90	100-110	120-125	140-150-160	200	250	300

SPHERICAL COUPLING IN IRON RACCORS SPHERIQUES EN FER UNIÃO À RÓTULA EM FERRO



Fig. 124 RB

Brida con curva 90° y macho

Flange with bend 90° and male

Bride avec courbe 90° et mâle

Abraçadeira com curva 90° e macho

	DIN 2576		PN-10			
Tipo	DN	ØD	ØK	Ød2	b	Nº Taladros
S-3	40	150	110	18	16	4
S-3	50	165	125	18	16	4
S-5	50	165	125	18	18	4
S-7	65	185	145	18	18	4
S-7	80	200	160	18	20	4
S-10	100	220	180	18	20	8
S-12	125	250	210	18	22	8
S-15	150	285	240	22	22	8
S-20	200	340	295	22	24	8
S-25	250	395	350	22	26	12
S-30	300	445	400	22	26	12

Tipo	DN	Cod.	P.V.P. €
S-3	40	31746	33,35
	50	31747	35,90
S-5	50	31748	37,67
S-7	65	31749	47,39
	80	31750	67,53
S-10	100	31751	74,35
S-12	125	31752	94,85
S-15	150	31753	119,15
S-20	200	31754	286,25
S-25	250	31755	467,60
S-30	300	31756	765,15



Fig. 125-M

Curvo hembra para manguera

Bend with female

Courbe avec femelle

Fêmea curva para mangueira

Tipo	DN	Cod.	P.V.P. €
S-3	20	31757	17,59
	25	31758	17,59
	30	31759	17,59
	35	10807	17,59
	40	11531	17,59
	45	31760	17,59
	50	10812	18,08
	60	10822	19,18
	65	32353	25,14
S-5	60	31761	23,39
	70	31762	25,14
S-7	70	13746	31,48
	75	31763	31,48
	80	15138	31,48
	90	10782	37,06
S-10	100	15139	47,82
	110	15140	60,12
S-12	120	31764	75,75
	125	18929	75,75
S-15	140	31765	89,25
	150	20164	110,80
	160	31766	110,80
S-20	200	092235	231,85
S-25	250	31767	302,65
S-30	300	31768	447,30

Tipo	S-3	S-5	S-7	S-10	S-12	S-15	S-20	S-25	S-30
Ø mm.	20-25-30-35-40-45-50-60	60-70	70-75-80-90	100-110	120-125	140-150-160	200	250	300

SPHERICAL COUPLING IN IRON RACCORS SPHERIQUES EN FER UNIÃO À RÓTULA EM FERRO
**Empalme forma T
con tres conexiones**

Juction forms T with three connections
La junction forme T avec trois connexions

Empalme em forma T com 3 ligações

M-M-M Ø 75x75x75 mm

M-M-M Ø 100x100x100 mm



	Cod.	P.V.P. €
75x75x75	32228	Consultar
100x100x100	32209	Consultar

Tipo	DN	Cod.	P.V.P. €
S-3	20	31769	15,26
	25	31770	15,26
	30	31771	15,26
	35	31772	15,26
	40	31773	15,26
	45	31774	15,26
	50	31775	15,26
S-5	60	31776	16,00
	60	31777	20,28
S-7	70	31778	22,64
	70	31779	28,55
	75	31780	28,55
S-10	80	31781	28,55
	90	31782	33,39
	100	31783	43,00
S-12	110	31784	55,45
	120	31785	72,17
S-15	125	31786	72,17
	140	31787	88,00
	150	31788	107,50
	160	31789	107,50
S-20	200	31790	213,05
S-25	250	31791	292,25
S-30	300	31792	416,70


Fig. 126-M

Curvo macho para manguera

Bend with male

Courbe avec mâle

Macho curvo para mangueira

Tipo	S-3	S-5	S-7	S-10	S-12	S-15	S-20	S-25	S-30
Ø mm.	20-25-30-35-40-45-50-60	60-70	70-75-80-90	100-110	120-125	140-150-160	200	250	300

Tipo	DN	Cod.	P.V.P. €
S-3	1/2"	31793	27,84
	3/4"		
	1"		
	1 1/4"		
	1 1/2"		
S-5	2"	31794	33,00
S-7	2"	31795	37,37
	2 1/2"	31796	47,30
S-10	3"	31797	55,40
	3 1/2"	31798	65,77
	4"	31799	72,05
S-12	4 1/2"	31800	88,15
S-15	5"	31801	119,25
	6"	31802	157,15
S-20	8"	31803	249,50
S-25	10"	31804	326,60
S-30	12"	31805	472,00


Fig. 127-E-RT

Curvo hembra-macho

Bend with male and female

Courbe mâle-femelle

Fêmea - macho curvo

Tipo	S-3	S-5	S-7	S-10	S-12	S-15	S-20	S-25	S-30
"Gas/Gaz	1/2"-3/4"-1"-1 1/4"-1 1/2"-2"	2"	2 1/2"-3"	3 1/2"-4"	4 1/2"	5"-6"	8"	10"	12"

SPHERICAL COUPLING IN IRON RACCORS SPHERIQUES EN FER UNIÃO À RÓTULA EM FERRO



Tipo	DN	Cod.	P.V.P. €
S-3	50	31819	11,35
S-5	60	31820	12,55
S-7	75	31821	18,03
S-10	100	31822	20,41
S-12	125	31823	25,02
S-15	150	31824	30,98
S-20	200	31825	88,25
S-25	250	31826	116,15
S-30	300	31827	259,10

Fig. 129-T

Tapón hembra
End plug female
Bouchon à femelle
Tampão fêmea

Tipo	S-3	S-5	S-7	S-10	S-12	S-15	S-20	S-25	S-30
Ø mm.	20-25-30-35-40-45-50-60	60-70	70-75-80-90	100-110	120-125	140-150-160	200	250	300



Tipo	Cod.	P.V.P. €
S-3	31828	8,92
S-5	31829	11,27
S-7	31830	13,80
S-10	31831	17,29
S-12	31832	22,73
S-15	31833	34,68
S-20	31834	60,00
S-25	31835	93,10
S-30	31836	179,45

Fig. 130-T

Tapón macho
End plug male
Bouchon mâle
Tampão macho

Tipo	S-3	S-5	S-7	S-10	S-12	S-15	S-20	S-25	S-30
Ø mm.	20-25-30-35-40-45-50-60	60-70	70-75-80-90	100-110	120-125	140-150-160	200	250	300

SPHERICAL COUPLING IN IRON RACCORS SPHERIQUES EN FER UNIÃO À RÓTULA EM FERRO

Tipo	DN	Cod.	P.V.P. €
S-3	40	31837	29,68
	50	32354	34,67
S-5	50	31838	34,67
S-7	65	31839	41,48
	80	31840	49,90
S-10	80	32355	56,57
	100	31841	56,57
S-12	100	32356	81,10
	125	31842	81,10
S-15	100	32357	90,50
	125	32358	90,50
	150	31843	90,50
S-20	200	31844	187,25
S-25	250	31845	232,50
S-30	300	31846	321,45



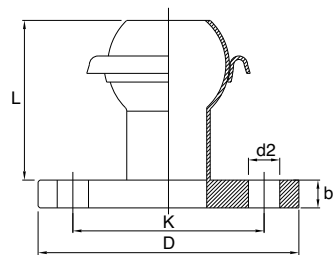
Fig. 131-B

Macho con brida
Male with flange

Mâle avec bride

Macho com abraçadeira

		DIN 2576		PN-10			
Tipo	DN	ØD	ØK	Ød2	b	Nº Taladros	L
S-3	40	150	110	18	16	4	90
S-5	50	165	125	18	18	4	120
S-7	65	185	145	18	18	4	160
S-7	80	200	160	18	20	4	160
S-10	100	220	180	18	20	8	180
S-12	125	250	210	18	22	8	200
S-15	150	285	240	22	22	8	200
S-20	200	340	295	22	24	8	240
S-25	250	395	350	22	26	12	270
S-30	300	445	400	22	26	12	330



Tipo	DN	Cod.	P.V.P. €
1 1/2"	40	31847	1,03
2"	50	31848	1,06
2 1/2"	65	31849	1,22
3"	80	31850	1,45
4"	100	31851	1,71
5"	125	31852	1,94
6"	150	31853	2,26
8"	200	31854	4,54
10"	250	31855	5,35
12"	300	31856	8,13



Fig. 167-J

Junta para brida
Joint for flange

Joint pour bride

Junta para abraçadeira

		DIN 2576				PN-10					
Tipo	DN	1 1/2"	2"	2 1/2"	3"	4"	5"	6"	8" 1	0"	12"
		40	50	65	80	100	125	150	200	250	300

SPHERICAL COUPLING IN IRON RACCORS SPHERIQUES EN FER UNIÃO À RÓTULA EM FERRO

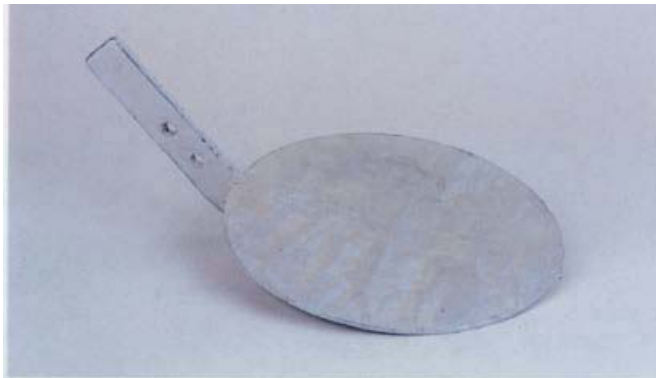


Fig. 123-ES

Difusor de esparcidor galvanizado
Galvanized jet distributor

Eventail zingue

Difusor com passador galvanizado

Tipo	Cod.	P.V.P. €
S-10		
S-12	31857	17,30
S-15		

Tipo	S-10	S-12	S-15
------	------	------	------



Fig. 141-ES

Esparcidor hembra
Female sewagespreader

Epandeur femelle

Passador fêmea

Tipo	Cod.	P.V.P. €
S-7	32359	68,67
S-10	31862	73,87
S-12	31863	79,56
S-15	31864	92,75
S-20	31865	249,00

Tipo	S-10	S-12	S-15	S-20
------	------	------	------	------



Fig. 142-ES

Esparcidor macho
Male sewagespreader

Epandeur mâle

Passador macho

Tipo	Cod.	P.V.P. €
S-10	31866	70,31
S-12	31867	74,97
S-15	31868	92,85

Tipo	S-10	S-12	S-15
------	------	------	------

SPHERICAL COUPLING IN IRON RACCORS SPHERIQUES EN FER UNIÃO À RÓTULA EM FERRO

Fig. 132-ES

Macho con brida para grifo

Male with flange for tap

Mâle avec bride pour robinet

Macho com abraçadeira para torneira



Tipo	Cod.	P.V.P. €
S-10	31869	60,27
S-12	31870	69,19
S-15	31871	78,07

Tipo

S-10

S-12

S-15

FITTINGS IN IRON ACCESSOIRES EN FER ACESSÓRIOS EM FERRO

ø mm	GAS	Cod.	P.V.P. €	ø mm	GAS	Cod.	P.V.P. €
20	1/2"	31872	12,10	60	1 1/2"	32367	13,09
	3/4"	31873	12,10		1 1/4"	32368	13,09
	1"	31874	12,10		2"	31902	ref. 10827
	1 1/4"	31875	12,10		2 1/2"	32369	14,43
	1 1/2"	31876	12,10		3"	32370	19,69
25	1/2"	31877	12,10	65	1 1/2"	32342	13,09
	3/4"	31878	12,10		2"	31903	13,09
	1"	31879	12,10	70	2"	32371	14,43
	1 1/4"	31880	12,10		2 1/2"	31904	14,43
	1 1/2"	31881	12,10		3"	32372	19,69
30	1/2"	31882	12,10	75	2"	32373	14,43
	3/4"	31883	12,10		2 1/2"	31905	ref. 15117
	1"	31884	12,10	3"	32374	19,69	
	1 1/4"	31885	12,10	80	2 1/2"	32375	19,69
	1 1/2"	31886	12,10		3"	31906	19,69
35	1/2"	31887	12,10		90	2 1/2"	32376
	3/4"	31888	12,10	3"		31907	ref.10898
	1"	31889	12,10	3 1/2"		32377	32,16
	1 1/4"	31890	12,10	4"	32378	32,16	
	1 1/2"	31891	12,10	100	3"	32321	32,16
40	1/2"	31892	12,10		3 1/2"	31908	32,16
	3/4"	31893	12,10		4"	31909	32,16
	1"	31894	12,10	3"	32379	32,16	
	1 1/4"	31895	ref. 31963	110	3 1/2"	31910	32,16
	1 1/2"	31896	12,10		4"	31911	ref.15118
45	2"	32360	13,09	120	4 1/2"	32380	36,48
	1"	32361	12,10		4"	32381	36,48
	1 1/2"	32362	12,10		4 1/2"	31912	36,48
	1 1/4"	32363	12,10	5"	32382	41,89	
	2"	32364	13,09	130	4"	32383	36,84
50	1/2"	31897	12,10		4 1/2"	31913	36,84
	3/4"	31898	12,10	5"	32384	41,89	
	1"	31899	12,10	140	4 1/2"	32385	41,89
	1 1/4"	31900	12,10		5"	31914	41,89
	1 1/2"	31901	ref. 10825	6"	32386	47,71	
2"	32365	13,09	150	5"	31915	41,89	
2 1/2"	32366	14,43		6"	32387	47,71	



Fig. 134-RM

Reductor rosca-manguera

Reduction thread-spigot

Réduction filet-porte tuyau

Redutor rosca - mangueira

ø mm	GAS	Cod.	P.V.P. €
160	5"	32388	47,71
	6"	31916	ref.31966
200	6"	32389	55,63
	8"	31917	55,63
250	10"	31918	CONSULTAR
300	12"	31919	CONSULTAR

Otras posibilidades CONSULTAR

ref. XXXXX - Consultar pág. 106

ø mm	20	25	30	35	40	45	50	60	65	70	75	80	90	100	110	120	125	140	150	160	200	250	300
"Gas/Gaz	1/2"	3/4"	1"	1 1/4"	1 1/2"	2"	2 1/2"	3"	3 1/2"	4"	4 1/2"	5"	6"	8"									